

Mathematics

Number and Place Value: Prime Numbers, rounding larger numbers. Multiples and factors

Calculation: Solve addition and subtraction multi-step problems in contexts, deciding which operations and methods to use and why.

Measures: Convert between units, understand equivalences between metric and imperial units.

Investigating angles: draw and measure angles, identify angles on a line

Science

Identify mini beasts. Learn scientific categories. Record data and results. Describe differences in life cycles. Create food chains. Life process of reproduction in plants and animals. Biodiversity.

Geography

Mini beast hunt. Make maps and plans. Locate natural habitat of range of insects using maps, atlases, globes and digital mapping.

Religious Education

Harvest: A time for thinking about our place in creation.

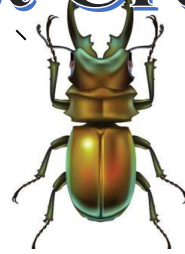
Religion and the Individual-How should believers live?

Gryffindor Class

Autumn Term 1 2017

Mrs. Hyatt & Mrs. Tomkins

Beast Creator



Literacy

Reading: Analyse non-fiction texts on a minibeast theme, identify common features of texts. Reflect on similarities between texts. Read Limericks and Kennings, justify reading preferences. Comment on writers' choice of vocabulary. Beetle Boy, M.G.Leonard

Writing: Plan, draft and chronological reports visit to Wye Valley Butterfly Zoo. Fantasy narrative based on novel Beetle Boy.

Grammar and Phonics, Spelling: on-going weekly, see separate plans

Handwriting: daily letter formation and presentation following 'The Write Path'

Computing

Create an instructional word document of instructions on making a wormery. with digital images and publish.

SmartArt life cycles

P.E

Hockey. Dance
Swimming

French

Revision of days of the week, months of the year.
Revision of colours and numbers.

Food , French café.

Art/ D&T

Drawings of minibeasts. Junk modelling/ recycling making insects. Look at Charles Darwin detailed drawings. Cath Hodsan Artist in residence drawings.

PSHE

Kindness and anti-bullying

Citizenship and British Values